

# Austin Resilience Hub Network Update

---

Joint Subcommittee for City of Austin, Travis County, and Austin Independent School District  
Office of Resilience  
January 22, 2024



# Outline

- 3** What are Resilience Hubs
- 8** City Facilities Update
- 13** Community Facilities
- 16** Community Capacity
- 19** Operational Updates
- 22** Next Steps

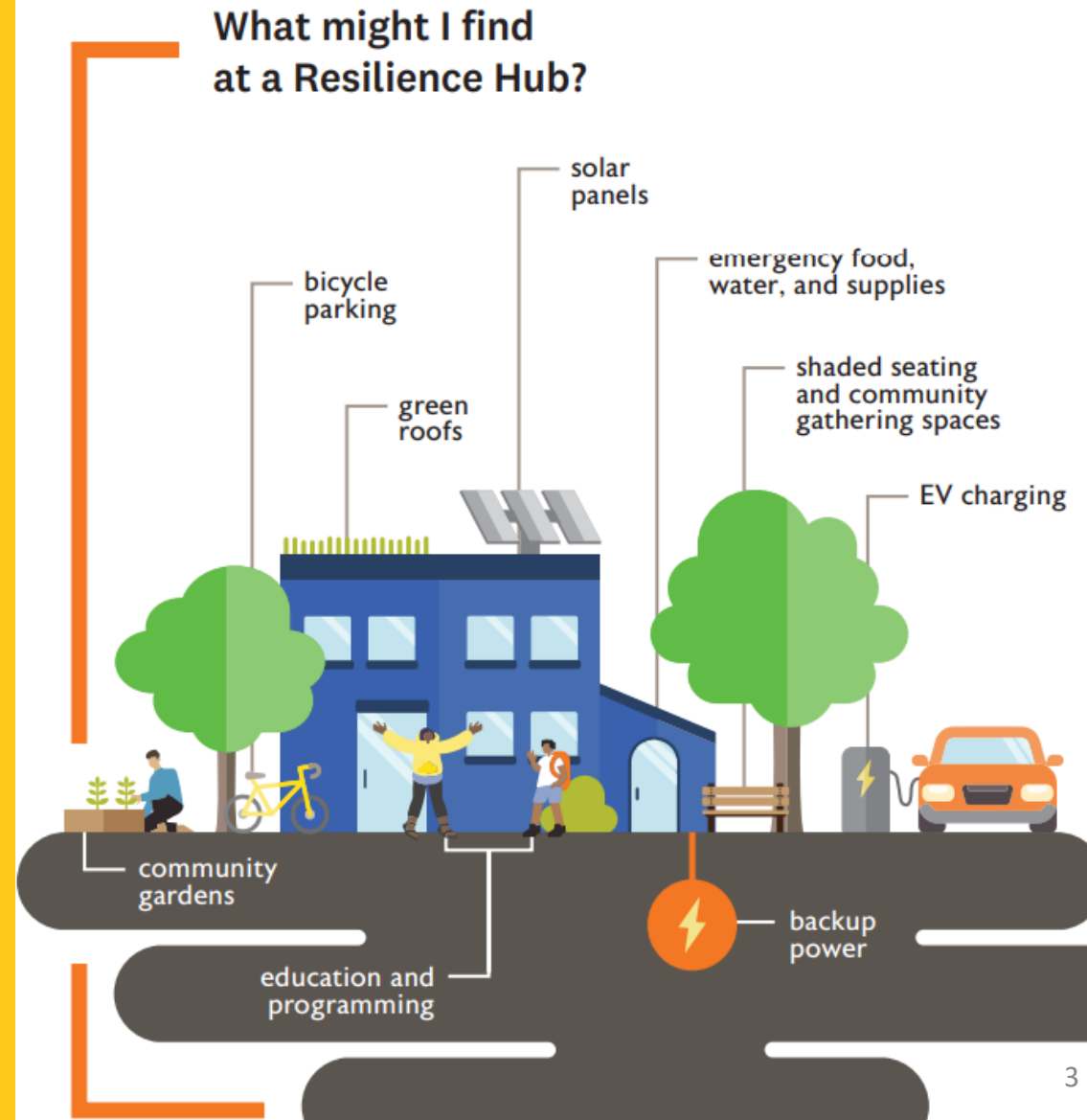
# What are Resilience Hubs?

## What they are:

- ✓ Networks of physical facilities
- ✓ Existing facilities
- ✓ **Community focused, people-focused**

## What they are NOT:

- ✗ Replacement for traditional emergency planning and disaster response
- ✗ Replacement for sheltering plan
- ✗ Stand alone, fully equipped facilities, open 24/7



# Why do we need a Resilience Hub Network?



## Stronger and more frequent disasters

- Extreme weather events
- Power and water outages
- Health & safety emergencies

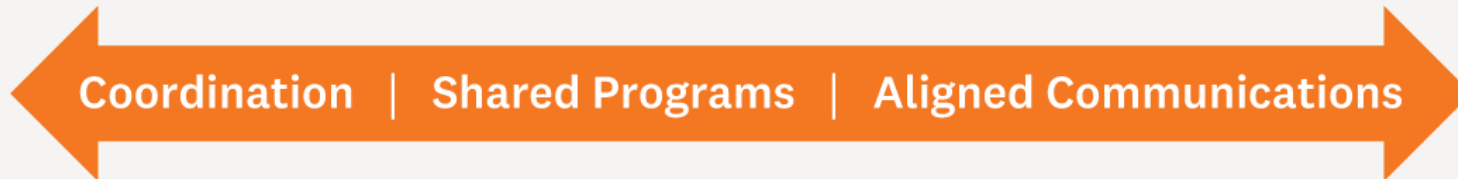
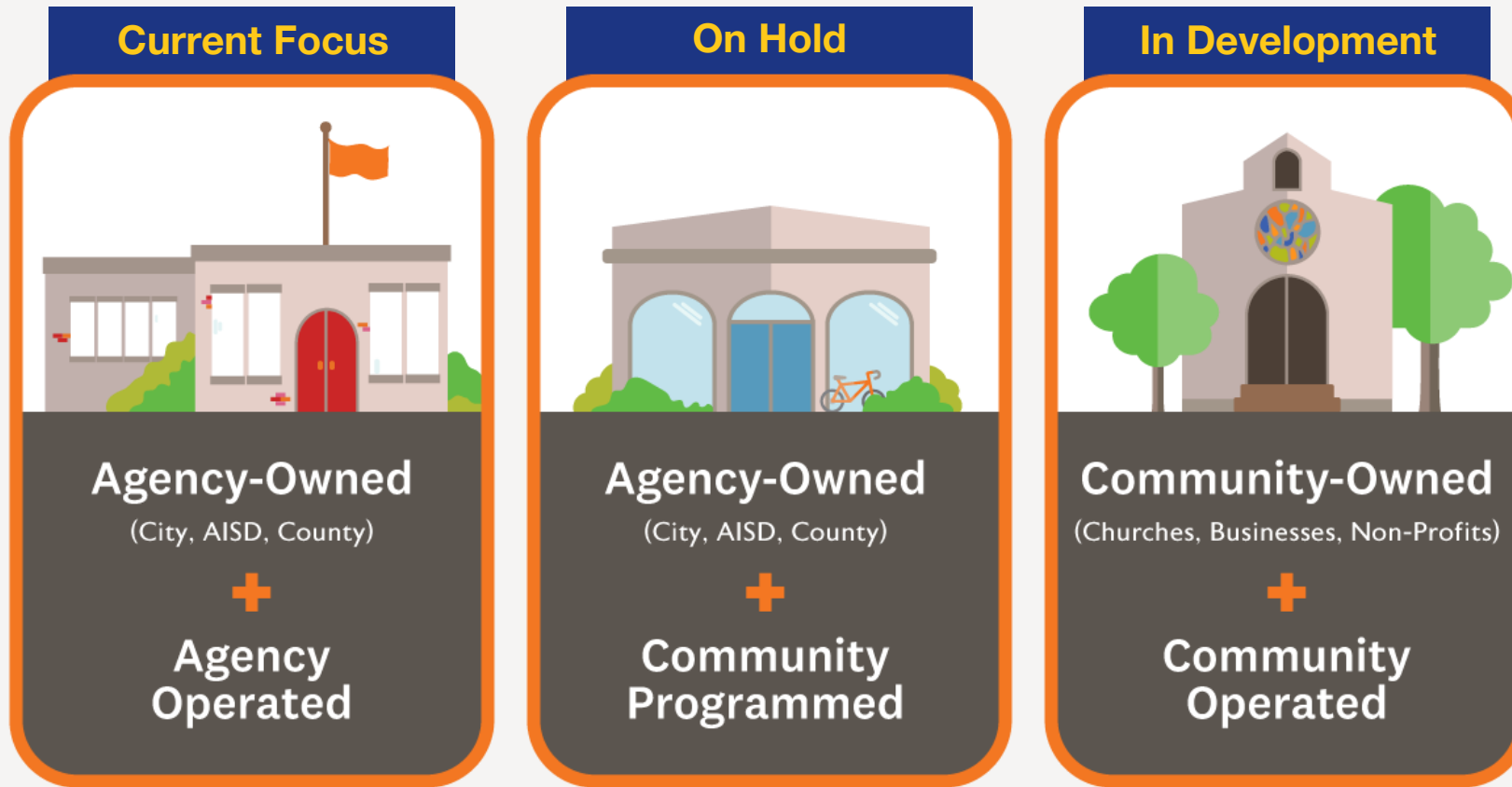
## Shocks and stresses highlight the need for

- Accessible community spaces
- Distribution centers (water, food, medicine, etc.)
- Aligned City services and information
- Back-up power & water
- Space of refuge during events
- Truly engaging community

# Hubs Selection Process



# Types of Hubs for the Austin Area



# Trusted Locations are:



**Home & Family**



**Places of Worship**



**Schools**



**Rec Centers &  
Libraries**

02

# City Facilities Update



# City Facilities Locations and Supplies

## 14 Facilities

1. **YMCA North Austin**
2. **Gus Garcia Recreation Center\***
3. **St. John Health + Virginia Brown Recreation Center**
4. **Turner Roberts Multipurpose Gym Room**
5. **Montopolis Recreation Center + health\***
6. **George Morales Dove Springs Recreation Center\***
7. Givens Recreation Center\*
8. Parque Zaragoza Recreation Center\*
9. Dittmar Gymnasium\*
10. Northwest Recreation Center\*
11. Rosewood Zaragosa Neighborhood Center
12. South Austin Neighborhood Center
13. East Austin Neighborhood Center
14. Blackland Neighborhood Center

**Bold: Initial 6 pilots**

**\* Mission Ready Packages placed at location to be activated by HSEM**

## Supplies

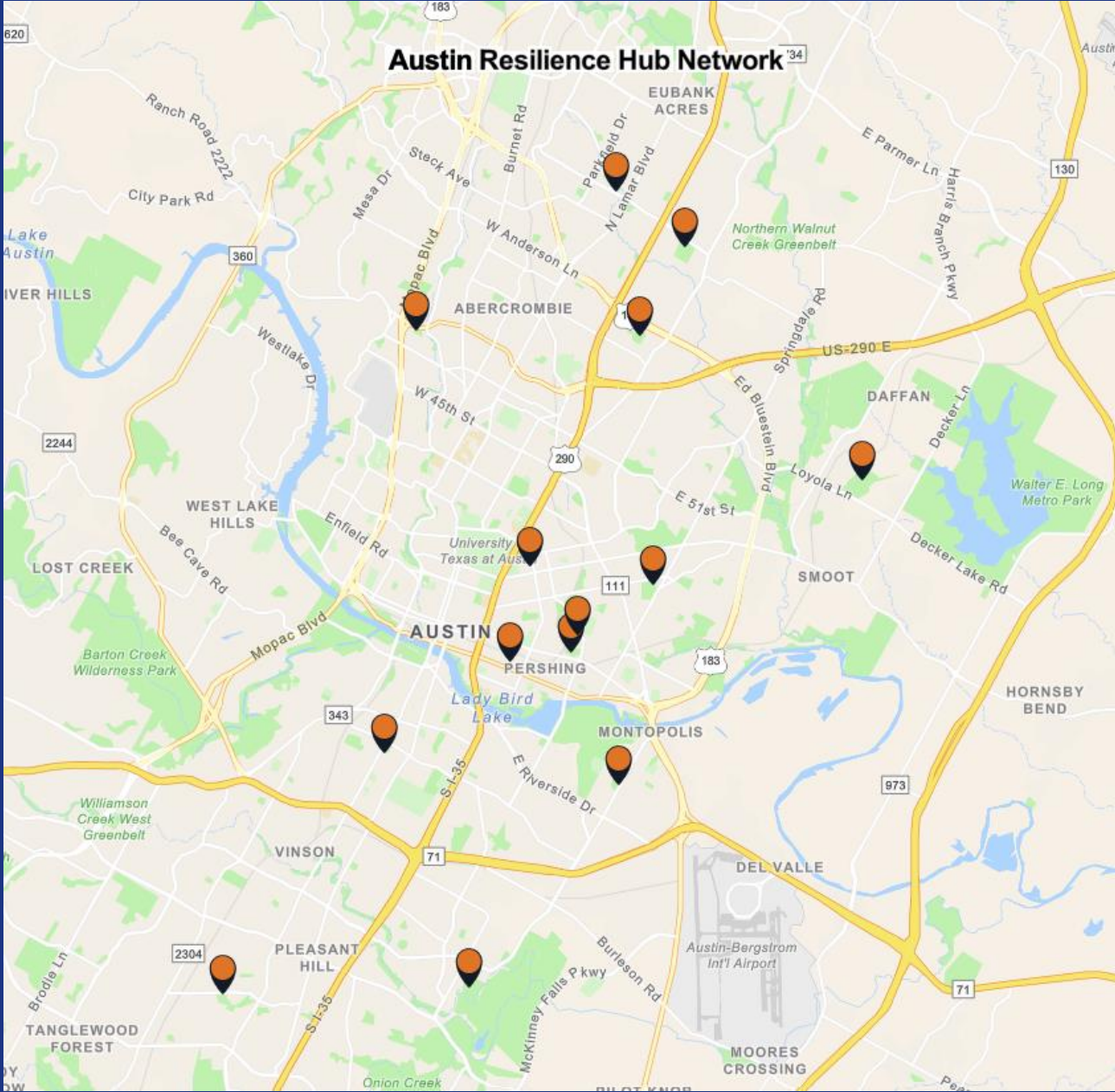
### Health Centers

- 3 pallets - bottled water
- 8000 Diapers
- 1500 Canned Protein
- 570 Hygiene Kits
- 3400 Protein Bars
- 400 Fruit Snacks
- 70 Sleeping Bags
- 200 Backpacks
- 350 Rain Ponchos
- 1200 Socks - Men
- 1600 Socks - Women
- 1152 Socks (winter)

### Community Health Workers

- 20 Backpacks,
- 100 Hand Warmers
- 100 Ponchos (disposable)
- 100 Snacks
- 20 Headlamp
- 10 Megaphone
- 100 Ponchos (disposable)
- 100 Shower Wipe
- 20 Disinfecting wipes
- 200 Hand/Body Warmers
- 20 First aid kit
- 200 Socks
- 200 Matches

# Austin Resilience Hub Network



# City Facilities Backup Power Updates

## Recreation Centers receiving electrical upgrades for backup power:

1. \*George Morales DS Recreation Center
2. Turner Roberts Multi-Purpose Room
3. \*Gus Garcia Recreation Center
4. Northwest Recreation Center
5. Montopolis Recreation Center
6. Parque Zaragoza Recreation Center

**PARD has 5 generators in hand - more to come**

**\*Working with AE to include community solar/battery backup at Dove Springs & Gus Garcia for redundancy**



# A Network of facilities provides flexibility for:

- Using different facility types
- Leveraging different activation protocols
- Meeting diverse and different community needs
- Builds redundancy in the Network
- Leverages existing trusted assets and services

---

- **Appendix Includes:**

- Capability & Definition, Facility type, Who it serves, Resources, Activation Protocols

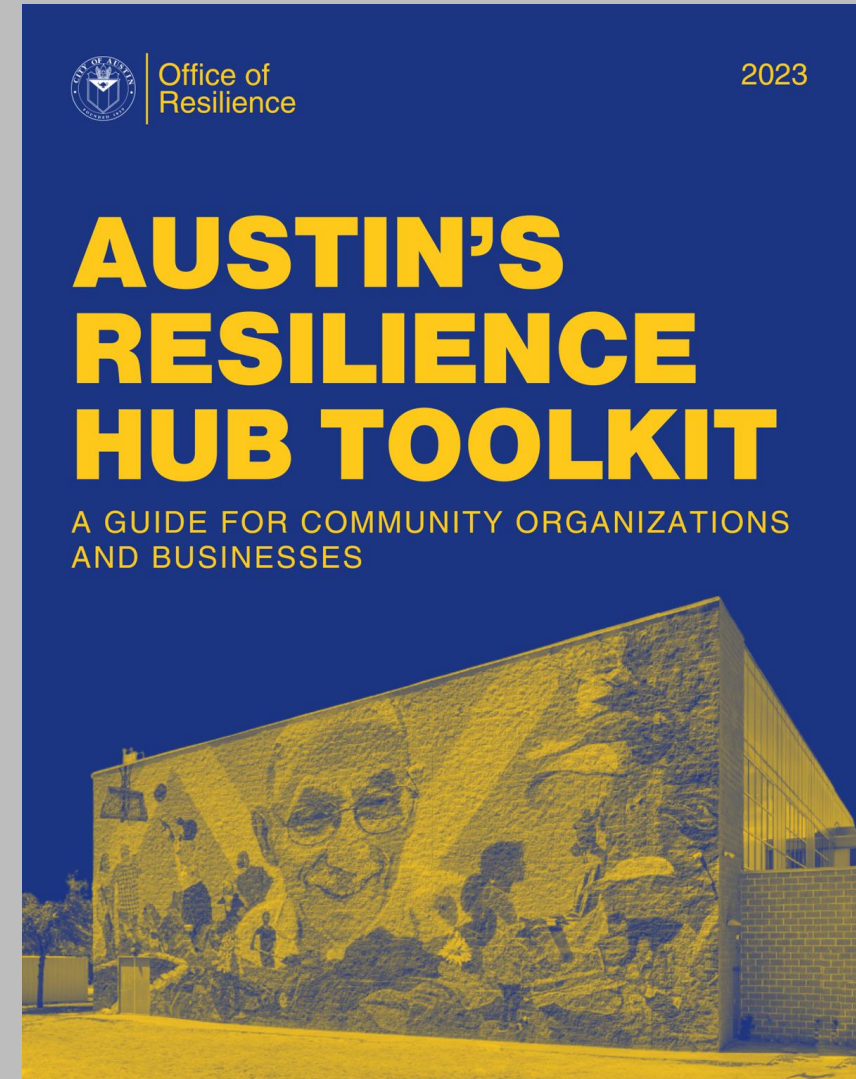
03

# Community Facilities



# Community Hubs - Resilience Hub Toolkit

- A guide for community organizations and businesses to join the Austin Resilience Hub Network
  - Introduction to Resilience Hubs
  - Five Steps for Prospective Hubs
  - Prerequisites for all Sites
    - Information Hubs
    - Warming or Cooling Centers
    - Food / Water Distribution Centers
    - Shelter Capable Facilities
- Access Toolkit [Here](#)



# Community Services at Hubs

## Pilot Mini Grants

- Support local community organizers, small businesses, and organizations that build resilience and serve racially and economically diverse Austinites
- Provide resources for preparedness training, supplies, workforce development opportunities, and more.
- Inform future Resilience Hub Network activities
- 26 mini-grant recipients. \$60,000 in total distribution
- Ice Cream Social to announce winners
- <https://www.austintexas.gov/news/city-austin-resilience-office-presents-first-mini-grant-program-awards-26-local-community-organizations>
- Cohort is required to submit an end of year survey that will provide key data to shape programming at hubs, and identify community programs to colocate



04

# Community Capacity



# Resources and Training at Hubs

## Training (OoR+HSEM) - Ready Together

- 59 registered
- Hands on, bilingual, community preparedness training
- At a resilience hub
- Pilot curriculum co-created w/ community & depts
- Get to know your neighbor Loteria
- Participants provided resources for their emergency kits
- Four trainings planned for 2024 at Hubs

## Preparedness guide at every Hub

- [Link in English](#)
- [Spanish translation](#)



# Community Involvement

## 20+ hours of tabling at community events

- Preparedness pop up participation
- Resource fairs
- Community partner preparedness fairs
- Ice cream social
- AISD showcase

## Community Engagement

- Phase II Consultant
- Focus on community organizations and community
- *“Familiar faces in familiar places”*

## Other data and community engagement opportunities leveraged

- Resilience CASPER
- Resilience Survey
- A2SI 2023
- Water distribution pilot

# 05

## Operational Updates

# Operational Updates

---

1. **Staffing:** Mass Care and Resilience Hub Manager onboarding
2. **Program transition to HSEM**, with support from Resilience Office for day to day needs and community engagement
3. **Supplies**
  - a. Creating inventories at each facility, linking with MRPs

# Winter Weather Readiness for Resilience Hubs

1. Facilities have been equipped with basic supplies for distribution
2. Pilot training has taken place at Montopolis
3. Preparedness fairs took place at multiple resilience hubs over the year
4. Facilities improvements for electrical upgrades to be completed
5. Generators acquired and deployed at six facilities
6. Encouraging individuals to check [ReadyCentralTexas](#) and [Alerts Page](#), along with individual facilities to know what facilities hours are, and what capacity they are serving.
7. Review [City's Winter Weather Readiness Report](#)

# Next Steps

1. Resilience Hubs are a network of facilities that are constantly evolving based on capacity and need, they are not 24/7 shelters. They must follow activation protocols based on needs (ie. shelter-ready, does not mean a guaranteed shelter and is defined by EOC).
2. Further support for collaboration between City of Austin, Austin Independent School District, and Travis County for regional programming
3. Creation of map with support from UT and online platform - in development as a communication tool for when facilities open and what type of services they provide.
4. Ongoing community engagement to support community daily needs
5. Onboarding Community Resilience Hubs

# Q&A

**Marc Coudert**

[marc.coudert@austintexas.gov](mailto:marc.coudert@austintexas.gov)

**Climate Resilience Program Manager**