



Water Conservation Landscape Programs

Chris Charles

Conservation Program Associate

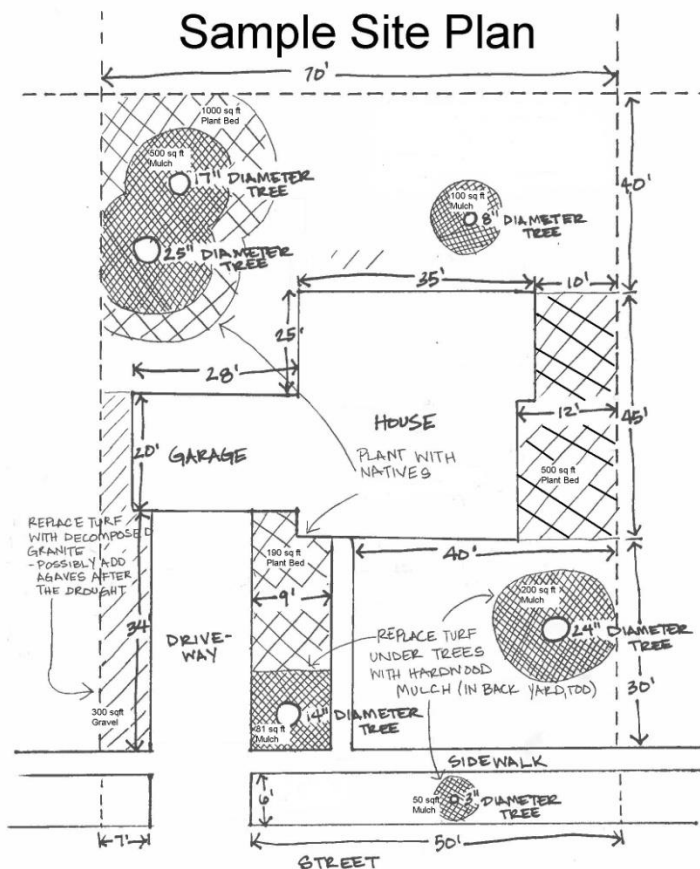
WaterWise Landscape Rebate Program



- We are giving an incentive to take out your healthy turf grass and replace it with native plant beds
- **\$35** for every 100 sq.ft. that is converted.
(min 500 sq.ft. – max 5000 sq.ft.)
- No turf to turf replacement, must be native plant bed and/or permeable hardscape

Eligibility

- Austin water residential customer or qualifying water provider
- Completion of application and materials
- Size of conversion area (500sqft min)
- Have not started work on the conversion (must be accepted into the program first)
- Health of current turf grass must be good



Current Turf Grass

- Quality of turf grass being replaced
- Pre-inspection of lawn needed if photos cannot determine the condition



Program Requirements

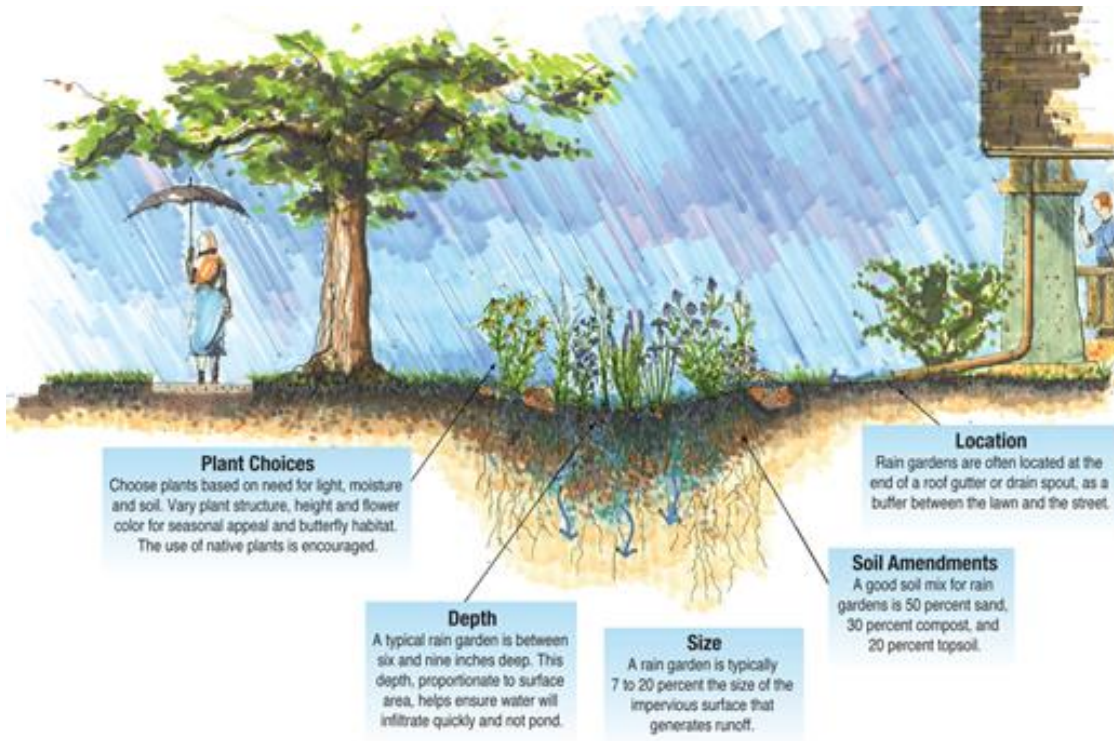
- Must add 1" compost to a minimum of 6" tilled soil to any plant beds outside the drip lines of trees.
- Plants from the Grow Green plant guide
- No more than 5% annuals
- Plant beds and mulch hardscape must have 2-3" of hardwood mulch
- Must use weed barrier fabric under gravel and mulch hardscape areas
- Conversion area must comprise of over 50% plant cover at maturity (We do not want to add to the "Heat Island" effect)

Program Requirements (cont.)

- Automatic systems must be capped off or converted to drip in the conversion area.
- No water features in conversion area
- No gravel areas greater than 3 feet in width

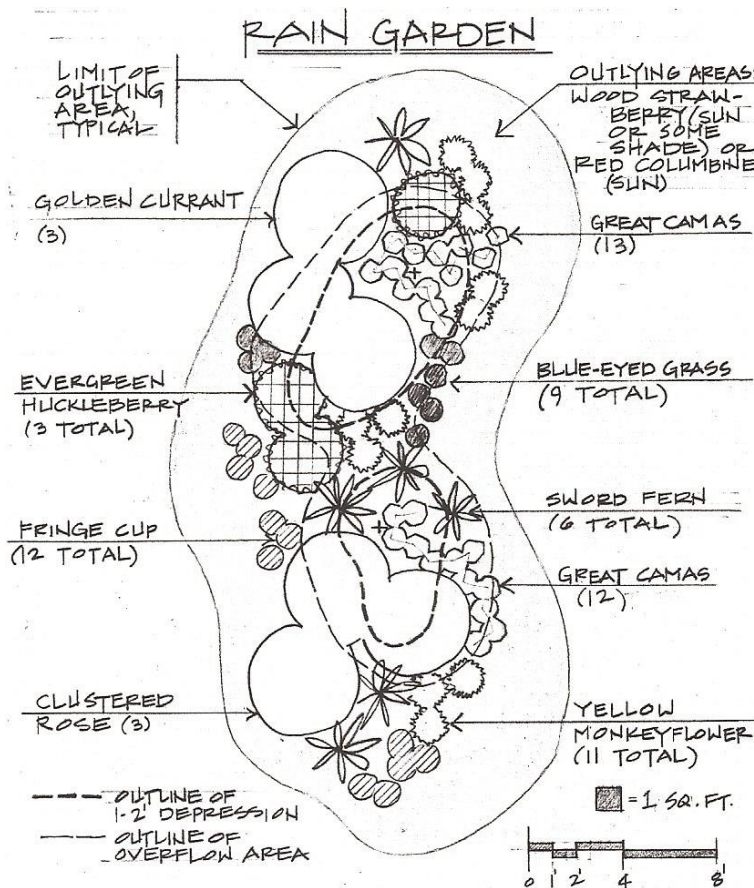


WaterWise Rainscape Rebate Program



- Homeowners and schools may receive up to \$500 (\$0.30/sq. foot -- 100 sq. foot min.) for installing landscape features such as rain gardens, berms, swales, terraces, porous pavement, and infiltration trenches that direct and retain rainwater on the property

Eligibility

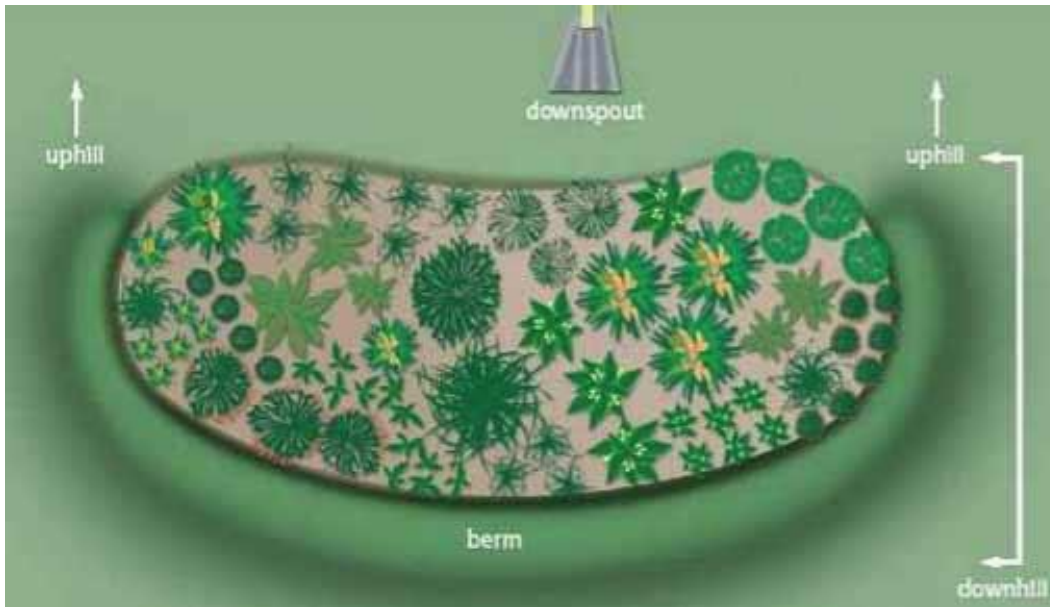


- Austin water residential/school customer or qualifying water provider
- Completion of application and materials
- Size of conversion area (100sqft min)
- Have not started work on the conversion (must be accepted into the program first)

Raingardens



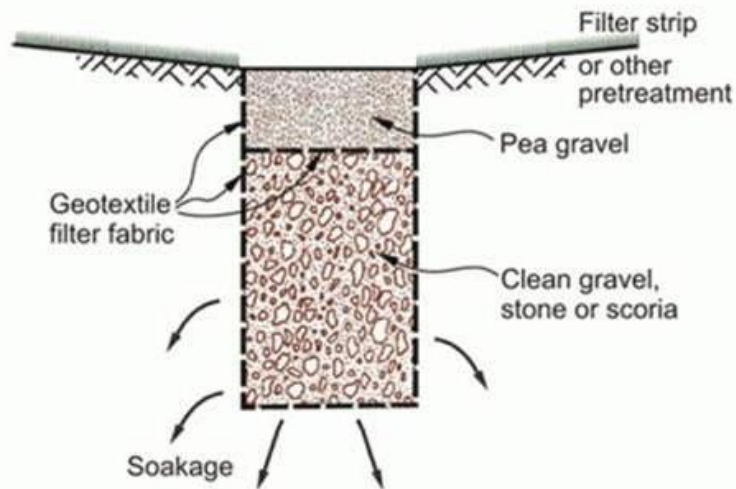
Berms and Swales



Rainwater Terracing



Porous Pavement and Infiltration



My Contact

Chris Charles – Water Conservation Associate

- Website: www.waterwiseaustin.org
(Conservation, Rebates)
- Water Conservation Mainline – 512-974-2199
- Email: christopher.charles@austintexas.gov