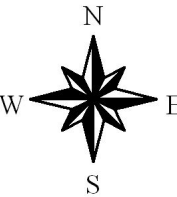
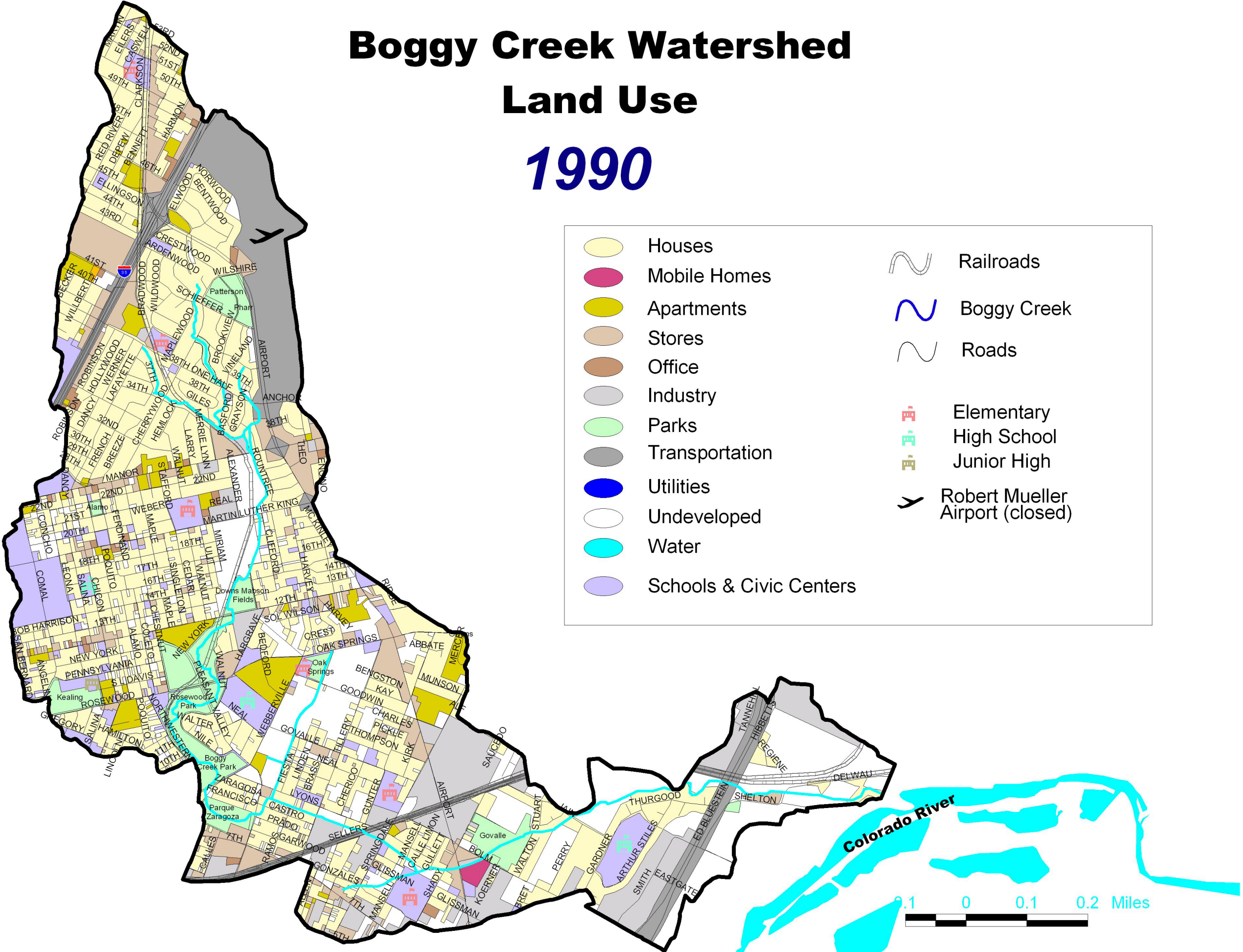
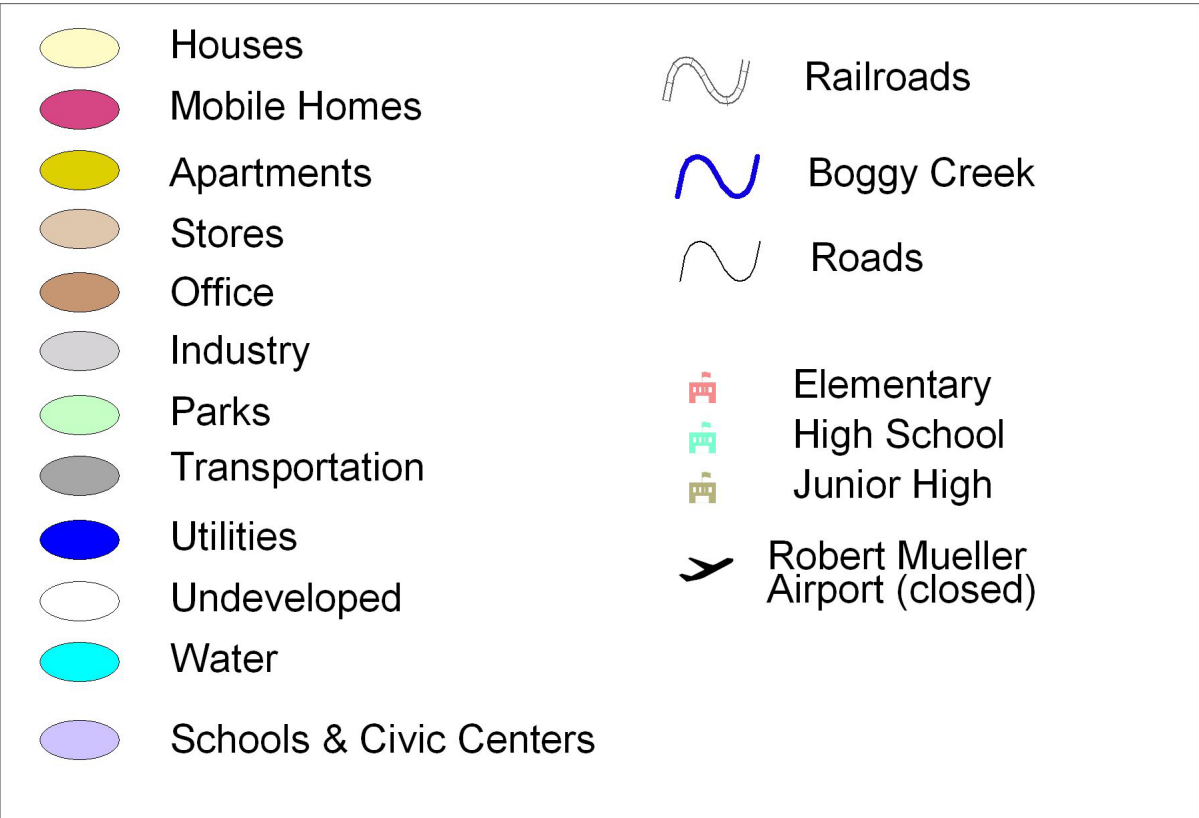


Boggy Creek Watershed Land Use 1990

1990 LAND USE STATS

Residential	34%
Business	15%
Civic	7%
Parks	4%
Roadways	26%
Undeveloped	14%



Watershed Protection & Development Review Department
The City of Austin produced this map for the sole purpose of use as a work resource. The City of Austin does not warrant the maps &/or information regarding its accuracy or completeness. Reproduction is not permitted without permission from the City of Austin.
Watershed Protection & Development Review Department

