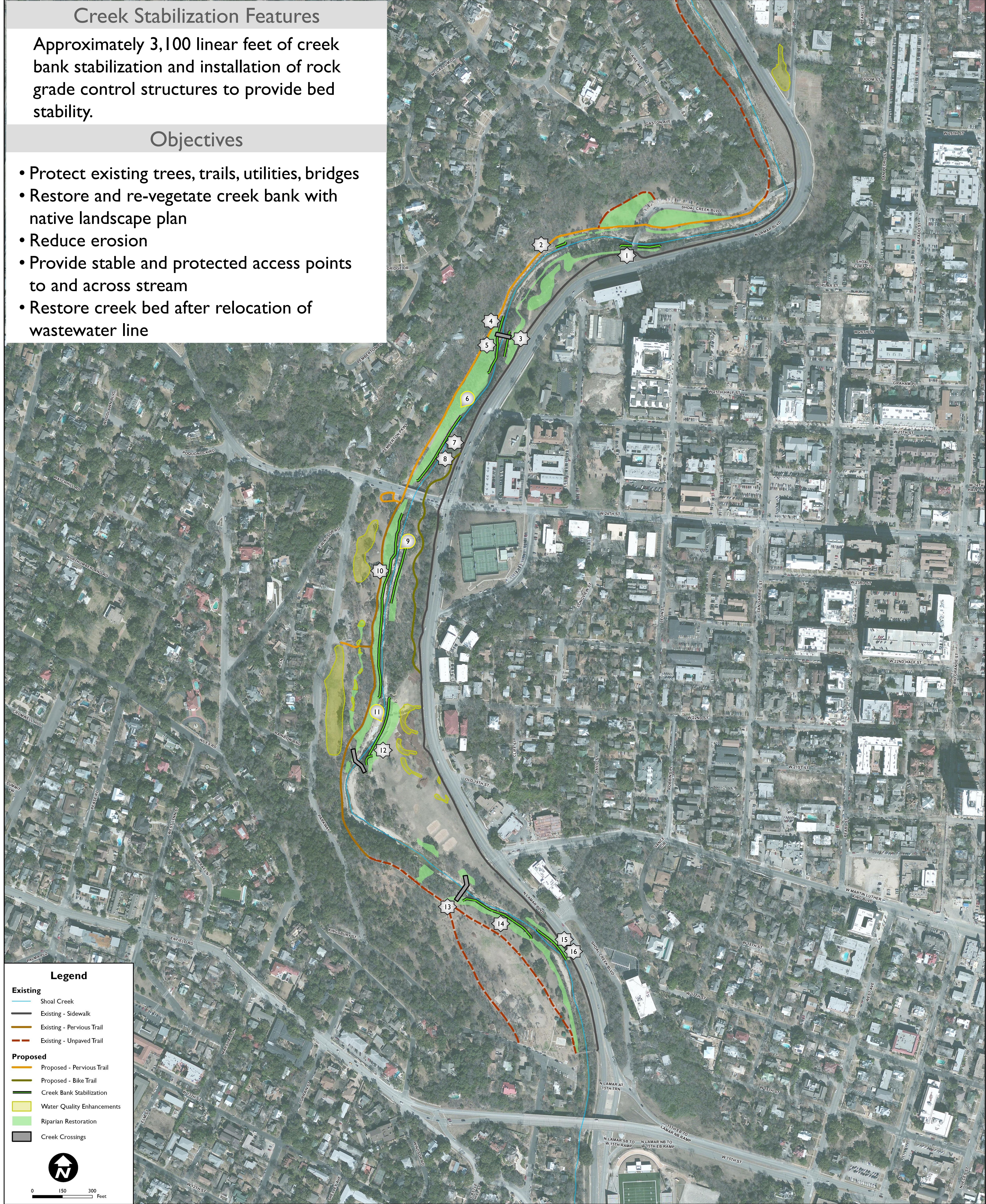


Creek Stabilization Features

Approximately 3,100 linear feet of creek bank stabilization and installation of rock grade control structures to provide bed stability.

Objectives

- Protect existing trees, trails, utilities, bridges
- Restore and re-vegetate creek bank with native landscape plan
- Reduce erosion
- Provide stable and protected access points to and across stream
- Restore creek bed after relocation of wastewater line



shoal creek restoration

15th to 28th streets

Creek Stabilization

