

**Austin-Bergstrom International Airport
Aviation Activity Report
Calendar Year 2019 vs 2018**

Combined Terminals

	4/2019	4/2018	Percent Change	1/2019 - 4/2019	1/2018 - 4/2018	Percent Change
ABIA						
Total Passenger Activity						
Domestic Enplaned Revenue	649,094	628,631	3.26	2,321,399	2,169,651	6.99
Domestic Deplaned Revenue	629,841	604,324	4.22	2,329,246	2,187,717	6.47
International Enplaned Revenue	16,332	16,659	-1.96	49,369	49,519	-0.30
International Deplaned Revenue	16,481	15,307	7.67	52,928	51,555	2.66
Domestic Enplaned Non-Revenue	14,165	13,526	4.72	54,000	53,004	1.88
Domestic Deplaned Non-Revenue	13,502	13,212	2.19	52,664	50,399	4.49
International Enplaned Non-Revenue	92	119	-22.69	444	495	-10.30
International Deplaned Non-Revenue	110	78	41.03	417	348	19.83
Intl Enplaned Pre-Cleared Revenue	2,529	1,900	33.11	9,208	6,824	34.94
Intl Deplaned Pre-Cleared Revenue	2,616	1,862	40.49	9,908	7,226	37.12
Intl Enplaned Pre-Cleared Non-Revenue	25	38	-34.21	119	109	9.17
Intl Deplaned Pre-Cleared Non-Revenue	21	35	-40.00	127	107	18.69
South Terminal Domestic Enplaned Revenue	32,131	15,004	114.15	116,565	52,579	121.69
South Terminal Domestic Deplaned Revenue	32,113	14,243	125.47	119,941	53,054	126.07
South Terminal Domestic Enplaned Non-Revenue	104	0	0.00	408	12	3,300.00
South Terminal Domestic Deplaned Non-Revenue	121	0	0.00	483	13	3,615.38
ABIA Passenger Totals	1,409,277	1,324,938	6.37	5,117,226	4,682,612	9.28
<i>ABIA Enplaned Passenger Totals</i>	<i>714,472</i>	<i>675,877</i>	<i>5.71</i>	<i>2,551,512</i>	<i>2,332,193</i>	<i>9.40</i>
<i>ABIA Deplaned Passenger Totals</i>	<i>694,805</i>	<i>649,061</i>	<i>7.05</i>	<i>2,565,714</i>	<i>2,350,419</i>	<i>9.16</i>
<i>ABIA Domestic Passenger Totals</i>	<i>1,371,071</i>	<i>1,288,940</i>	<i>6.37</i>	<i>4,994,706</i>	<i>4,566,429</i>	<i>9.38</i>
<i>ABIA International Passenger Totals</i>	<i>38,206</i>	<i>35,998</i>	<i>6.13</i>	<i>122,520</i>	<i>116,183</i>	<i>5.45</i>
CURRENT PASSENGER RECORD = 1,511,634 RECORD SET = JULY 2018						
Total Aircraft Operations						
Air Carrier	11,520	11,295	1.99	43,595	41,224	5.75
Commuter & Air Taxi	1,358	1,385	-1.95	5,616	5,781	-2.85
Military	1,063	1,119	-5.00	3,517	3,006	17.00
General Aviation						
Itinerant	3,927	4,221	-6.97	14,442	15,318	-5.72
Local	56	124	-54.84	276	553	-50.09
Total G.A.	3,983	4,345	-8.33	14,718	15,871	-7.26
Total Operations	17,924	18,144	-1.21	67,446	65,882	2.37

**Austin-Bergstrom International Airport
Aviation Activity Report
Calendar Year 2019 vs 2018**

By Terminal

	4/2019	4/2018	Percent Change	1/2019 - 4/2019	1/2018 - 4/2018	Percent Change
<u>Barbara Jordan Terminal (BJT)</u>						
Passenger Activity						
Domestic Enplaned Revenue	649,094	628,631	3.26	2,321,399	2,169,651	6.99
Domestic Deplaned Revenue	629,841	604,324	4.22	2,329,246	2,187,717	6.47
International Enplaned Revenue	16,332	16,659	-1.96	49,369	49,519	-0.30
International Deplaned Revenue	16,481	15,307	7.67	52,928	51,555	2.66
Domestic Enplaned Non-Revenue	14,165	13,526	4.72	54,000	53,004	1.88
Domestic Deplaned Non-Revenue	13,502	13,212	2.19	52,664	50,399	4.49
International Enplaned Non-Revenue	92	119	-22.69	444	495	-10.30
International Deplaned Non-Revenue	110	78	41.03	417	348	19.83
Intl Enplaned Pre-Cleared Revenue	2,529	1,900	33.11	9,208	6,824	34.94
Intl Deplaned Pre-Cleared Revenue	2,616	1,862	40.49	9,908	7,226	37.12
Intl Enplaned Pre-Cleared Non-Revenue	25	38	-34.21	119	109	9.17
Intl Deplaned Pre-Cleared Non-Revenue	21	35	-40.00	127	107	18.69
Barbara Jordan Terminal Passenger Totals	1,344,808	1,295,691	3.79	4,879,829	4,576,954	6.62
<i>BJT Enplaned Passenger Totals</i>	<i>682,237</i>	<i>660,873</i>	<i>3.23</i>	<i>2,434,539</i>	<i>2,279,602</i>	<i>6.80</i>
<i>BJT Deplaned Passenger Totals</i>	<i>662,571</i>	<i>634,818</i>	<i>4.37</i>	<i>2,445,290</i>	<i>2,297,352</i>	<i>6.44</i>
<i>BJT Domestic Passenger Totals</i>	<i>1,306,602</i>	<i>1,259,693</i>	<i>3.72</i>	<i>4,757,309</i>	<i>4,460,771</i>	<i>6.65</i>
<i>BJT International Passenger Totals</i>	<i>38,206</i>	<i>35,998</i>	<i>6.13</i>	<i>122,520</i>	<i>116,183</i>	<i>5.45</i>
<u>South Terminal (ST)</u>						
Passenger Activity						
South Terminal Domestic Enplaned Revenue	32,131	15,004	114.15	116,565	52,579	121.69
South Terminal Domestic Deplaned Revenue	32,113	14,243	125.47	119,941	53,054	126.07
South Terminal Domestic Enplaned Non-Revenue	104	0	0.00	408	12	3300.00
South Terminal Domestic Deplaned Non-Revenue	121	0	0.00	483	13	3615.38
South Terminal Passenger Totals	64,469	29,247	120.43	237,397	105,658	124.68
<i>ST Enplaned Passenger Totals</i>	<i>32,235</i>	<i>15,004</i>	<i>114.84</i>	<i>116,973</i>	<i>52,591</i>	<i>122.42</i>
<i>ST Deplaned Passenger Totals</i>	<i>32,234</i>	<i>14,243</i>	<i>126.31</i>	<i>120,424</i>	<i>53,067</i>	<i>126.93</i>

**Austin-Bergstrom International Airport
Aviation Activity Report
Calendar Year 2019 vs 2018**

	4/2019	4/2018	Percent Change	1/2019 - 4/2019	1/2018 - 4/2018	Percent Change
<u>Total Cargo Activity</u>						
Mail						
Domestic Enplaned Mail	217,244	207,257	4.82	810,861	721,722	12.35
Domestic Deplaned Mail	772,402	441,990	74.76	2,782,714	1,611,024	72.73
International Enplaned Mail	0	0	0.00	0	0	0.00
International Deplaned Mail	0	0	0.00	110,830	0	0.00
South Terminal-Domestic Enplaned Mail	0	0	0.00	0	0	0.00
South Terminal-Domestic Deplaned Mail	0	0	0.00	0	0	0.00
Mail Totals	989,646	649,247	52.43	3,704,405	2,332,746	58.80
Cargo						
Domestic Enplaned Cargo	4,692,263	4,564,190	2.81	19,754,307	19,345,175	2.11
Domestic Deplaned Cargo	6,602,143	6,475,930	1.95	25,729,415	27,127,865	-5.16
International Enplaned Cargo	809,688	910,433	-11.07	1,556,377	2,544,587	-38.84
International Deplaned Cargo	1,000,463	949,085	5.41	1,450,510	1,519,487	-4.54
South Terminal-Domestic Enplaned Cargo	0	0	0.00	0	0	0.00
South Terminal-Domestic Deplaned Cargo	0	0	0.00	0	0	0.00
Cargo Totals	13,104,557	12,899,638	1.59	48,490,609	50,537,114	-4.05
Belly Freight						
Domestic Enplaned Belly Freight	326,539	327,479	-0.29	1,213,703	1,027,467	18.13
Domestic Deplaned Belly Freight	499,031	521,126	-4.24	1,928,554	1,710,349	12.76
International Enplaned Belly Freight	162,754	264,616	-38.49	1,326,831	1,122,277	18.23
International Deplaned Belly Freight	479,653	502,965	-4.63	2,659,464	2,337,105	13.79
South Terminal-Domestic Enplaned Belly Frght	0	0	0.00	0	0	0.00
South Terminal-Domestic Deplaned Belly Frght	0	0	0.00	0	0	0.00
Belly Freight Totals	1,467,977	1,616,186	-9.17	7,128,552	6,197,198	15.03
Cargo Totals (Mail, Cargo, Belly Freight)	15,562,180	15,165,071	2.62	59,323,566	59,067,058	0.43
<i>Enplaned Cargo Totals</i>	6,208,488	6,273,975	-1.04	24,662,079	24,761,228	-0.40
<i>Deplaned Cargo Totals</i>	9,353,692	8,891,096	5.20	34,661,487	34,305,830	1.04
<i>Domestic Cargo Totals</i>	13,109,622	12,537,972	4.56	52,219,554	51,543,602	1.31
<i>International Cargo Totals</i>	2,452,558	2,627,099	-6.64	7,104,012	7,523,456	-5.58

CURRENT CARGO RECORD = 40,215,518

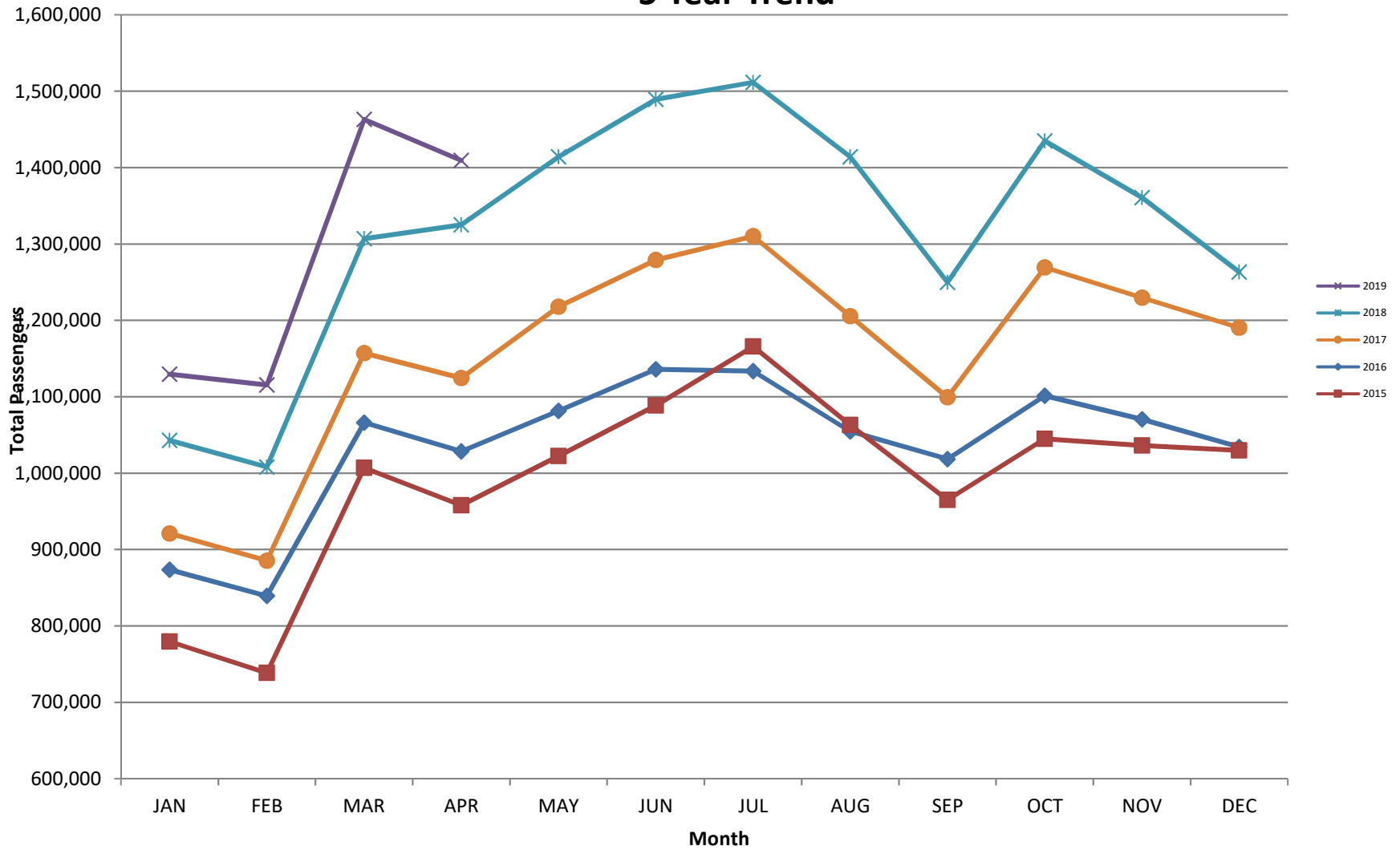
RECORD SET = MARCH 2001

AUS – Airline Codes
April 2019

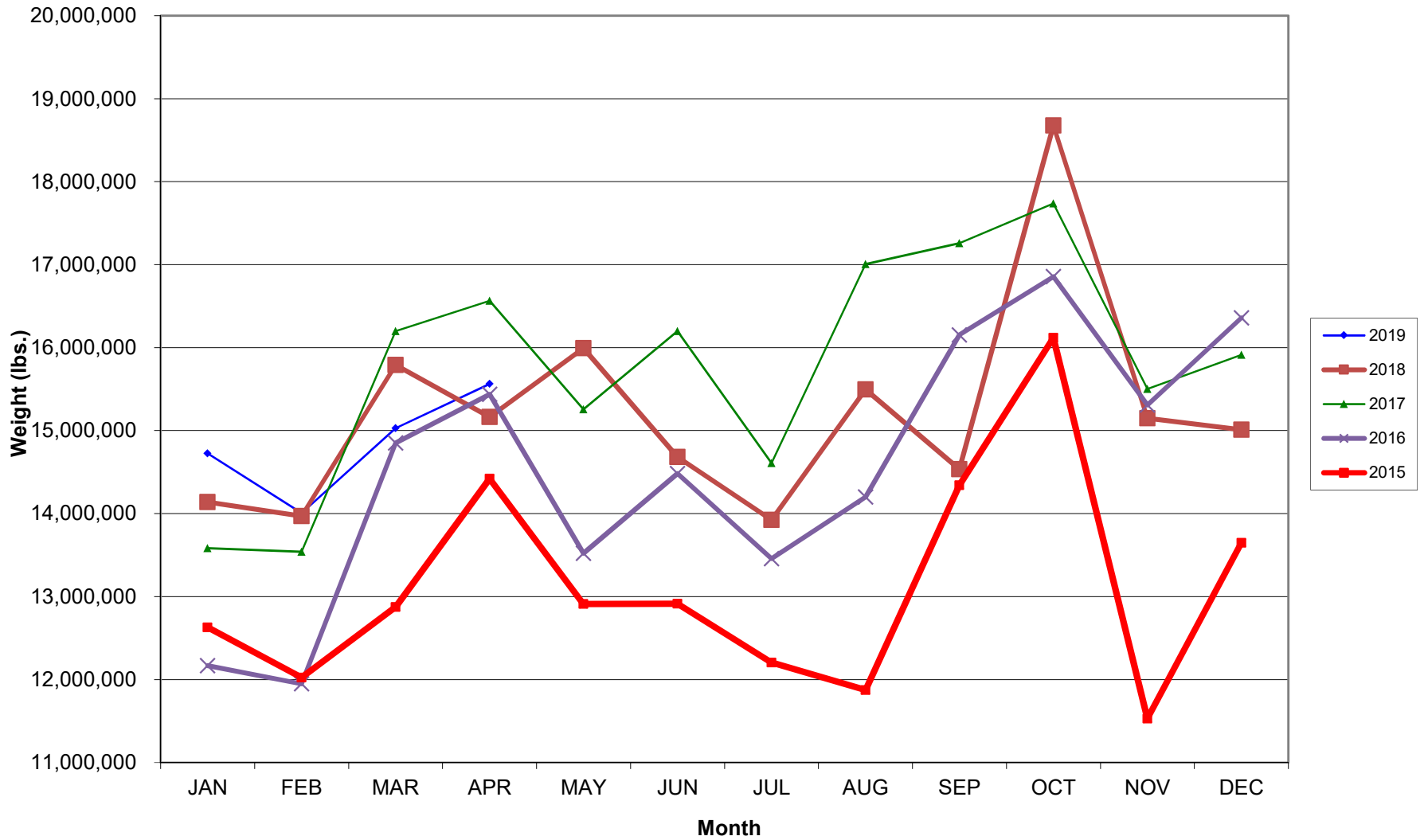
<u>Code</u>	<u>Carrier</u>
AM	Aerovias de Mexico S.A. de C.V. dba AeroMexico Airlines
AC	Air Canada
AS	Alaska Airlines, Inc.
G4	Allegiant Air, LLC
AA	American Airlines, Inc.
BA	British Airways Plc
DL	Delta Airlines
F9	Frontier Airlines
B6	JetBlue Airways Corp.
DY	Norwegian Air UK LTD
WN	Southwest Airlines
NK	Spirit Airlines
SY	Sun Country Airlines
UA	United Airlines, Inc.
VC	VIA Airlines

AUSTIN PASSENGER TRAFFIC

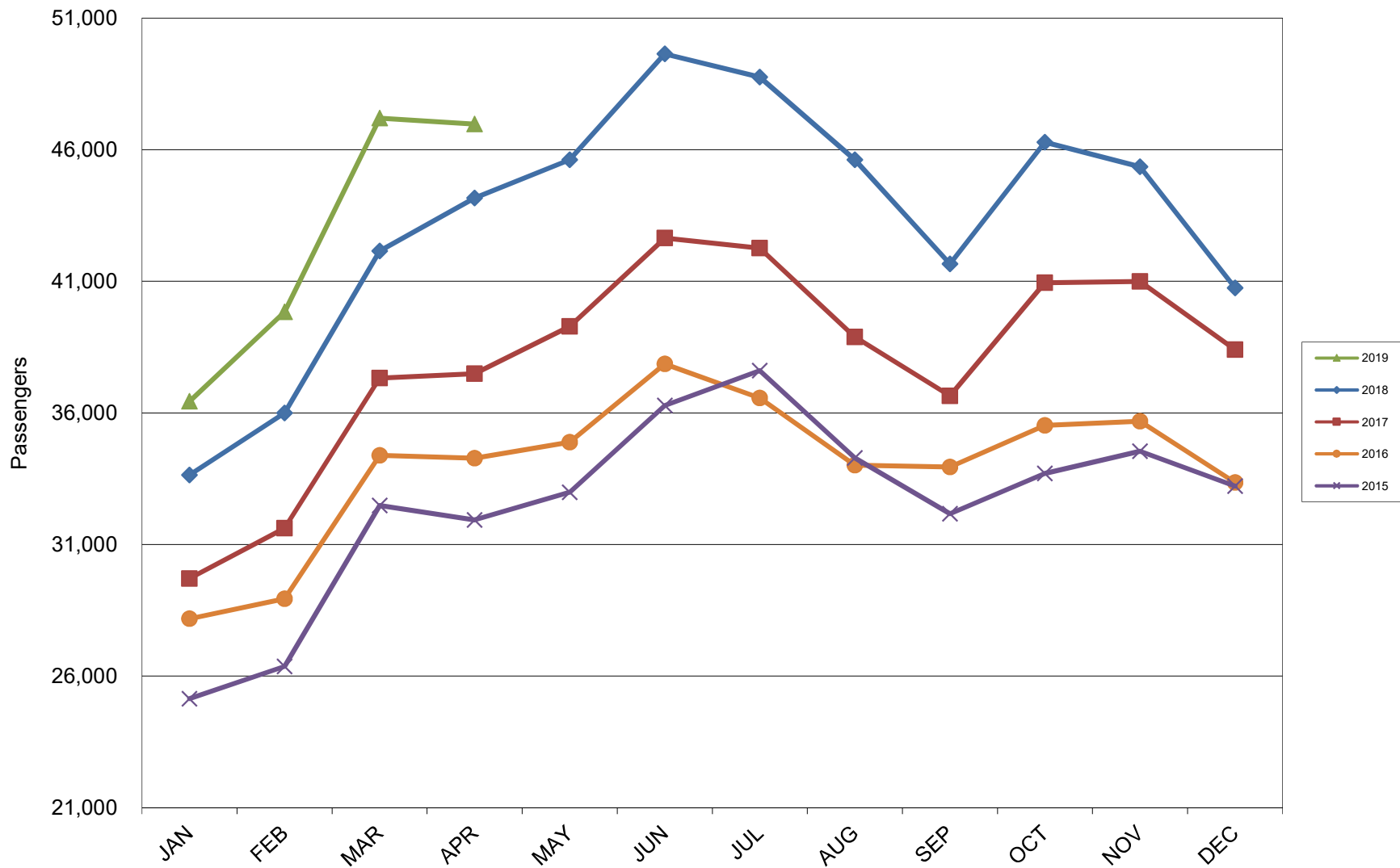
5 Year Trend



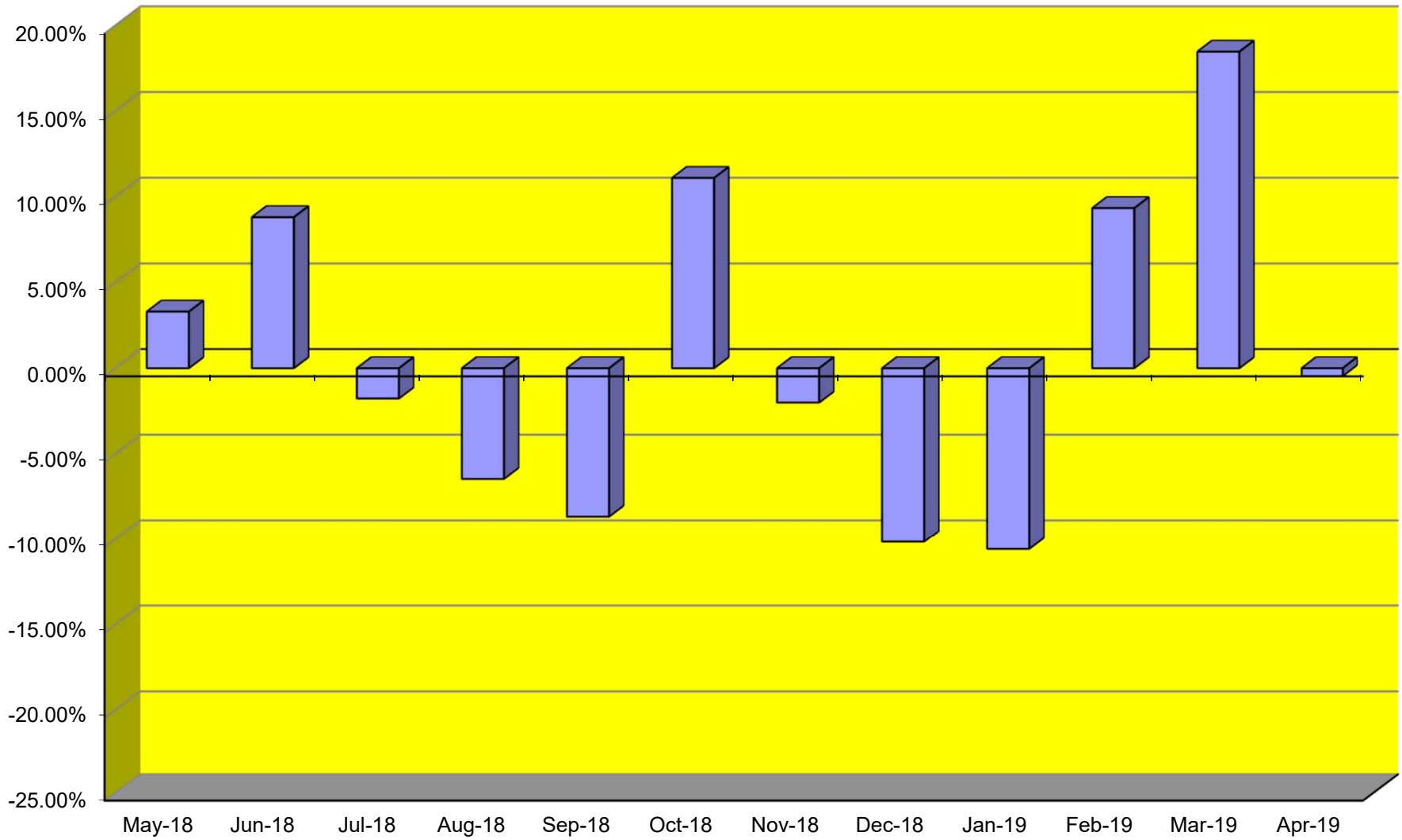
TOTAL CARGO POUNDAGE - AUSTIN, TEXAS



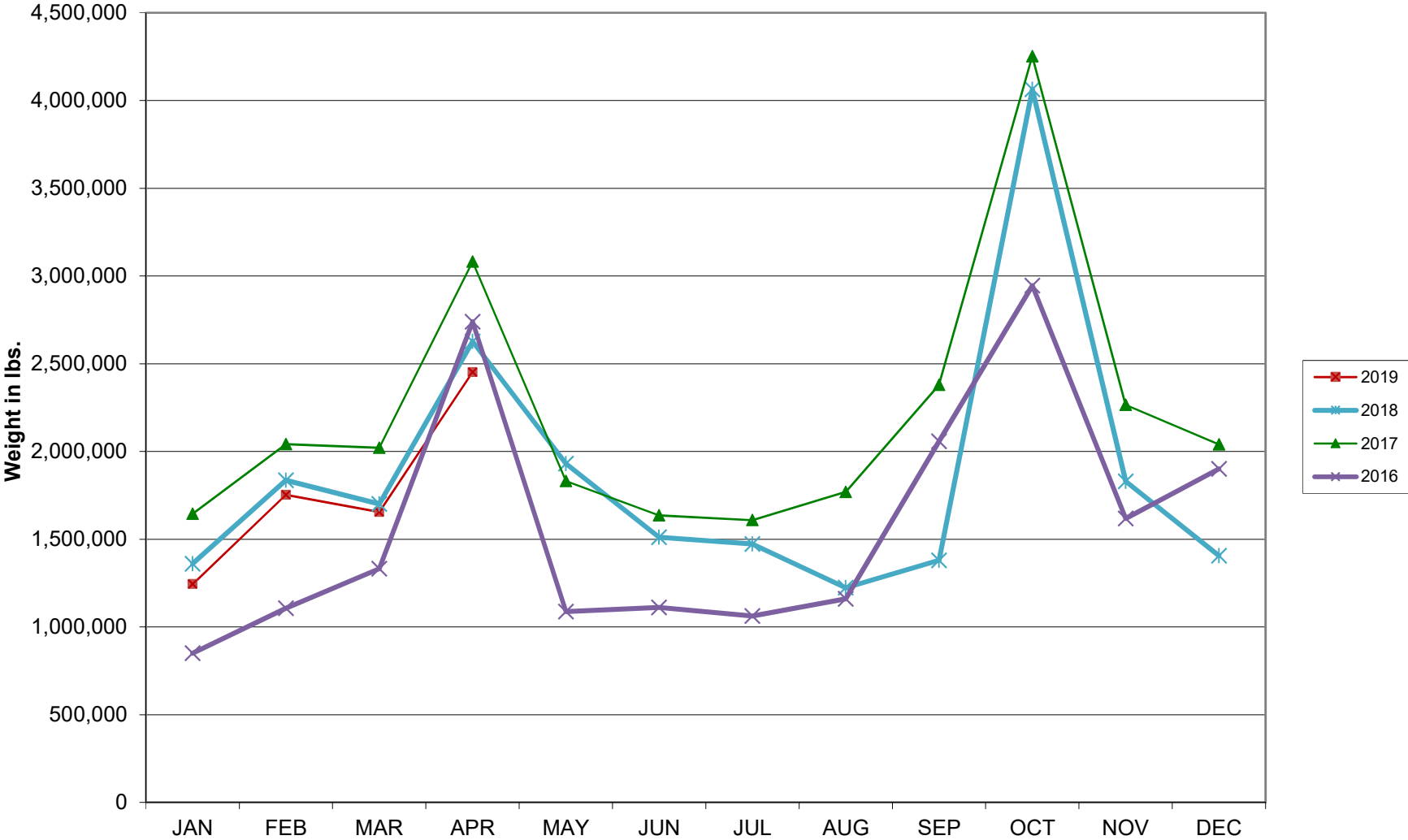
Average Daily Passengers



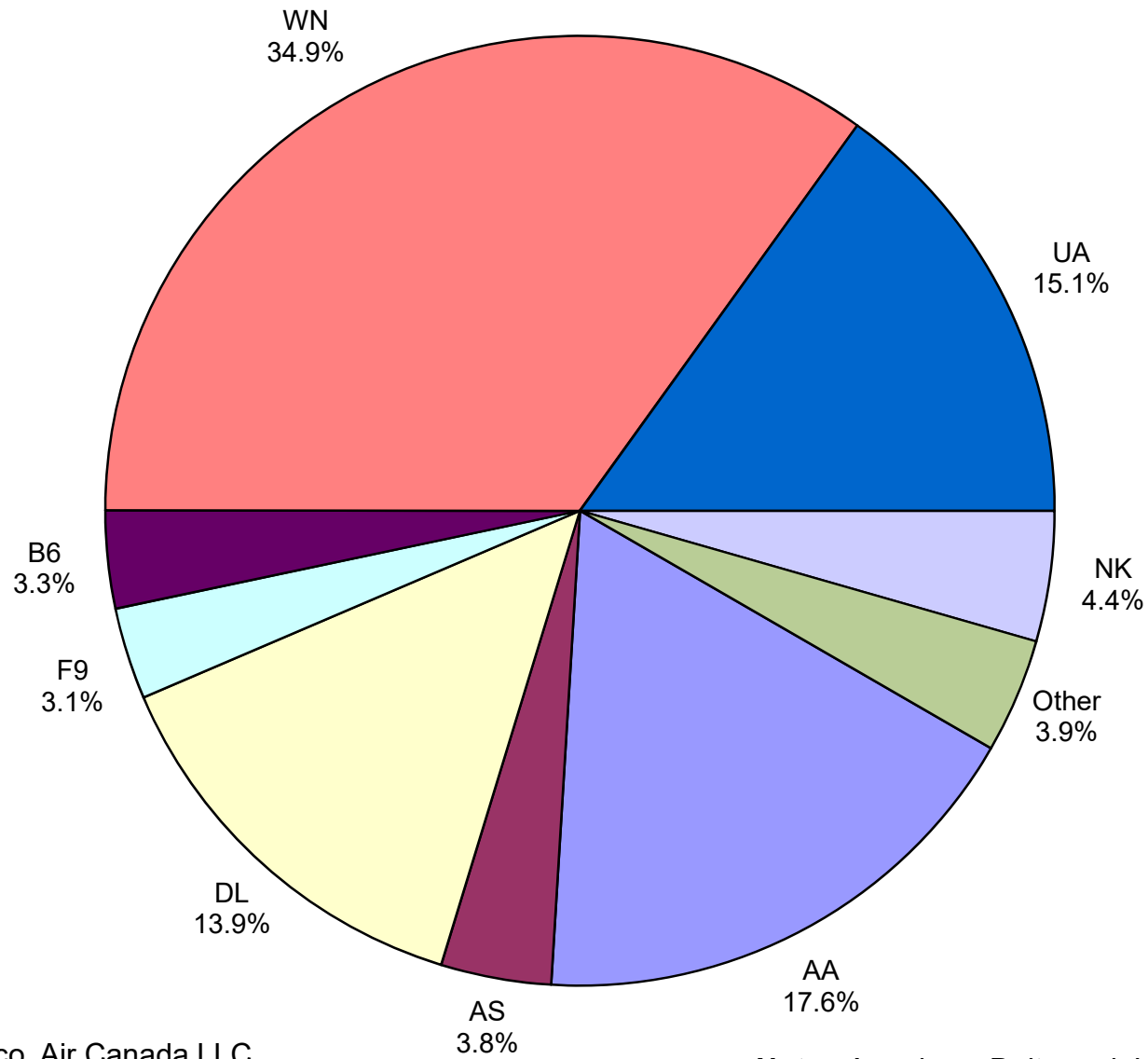
Monthly % Change in Average Daily Passengers



HISTORY OF INTERNATIONAL AIR CARGO



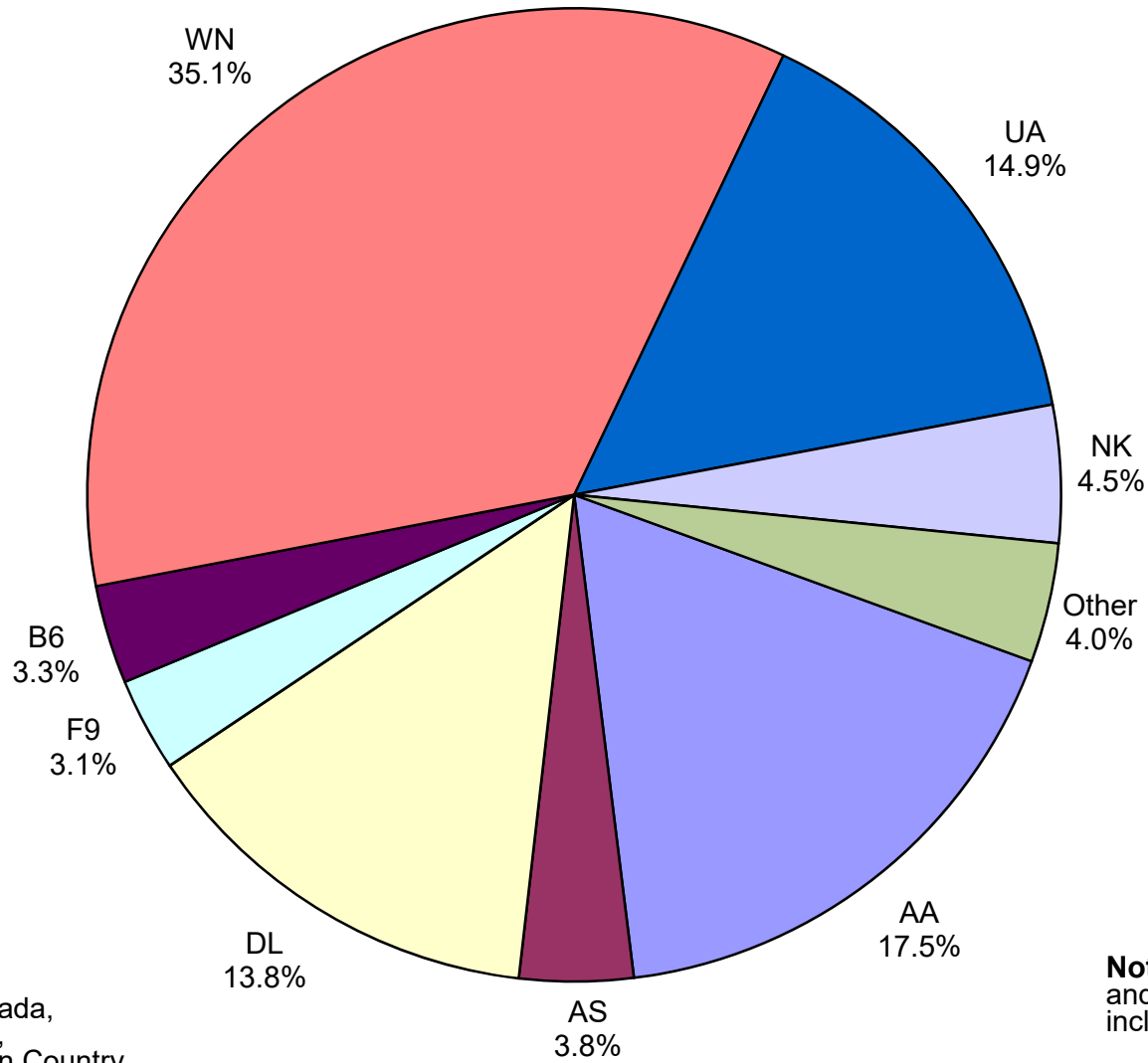
Total Passengers April 2019



Other: Aeromexico, Air Canada LLC, Allegiant Air, British Airways, Norwegian Air UK, LTD, Sun Country and VIA Airlines

Note: American, Delta and United Airlines percentages include Affiliates.

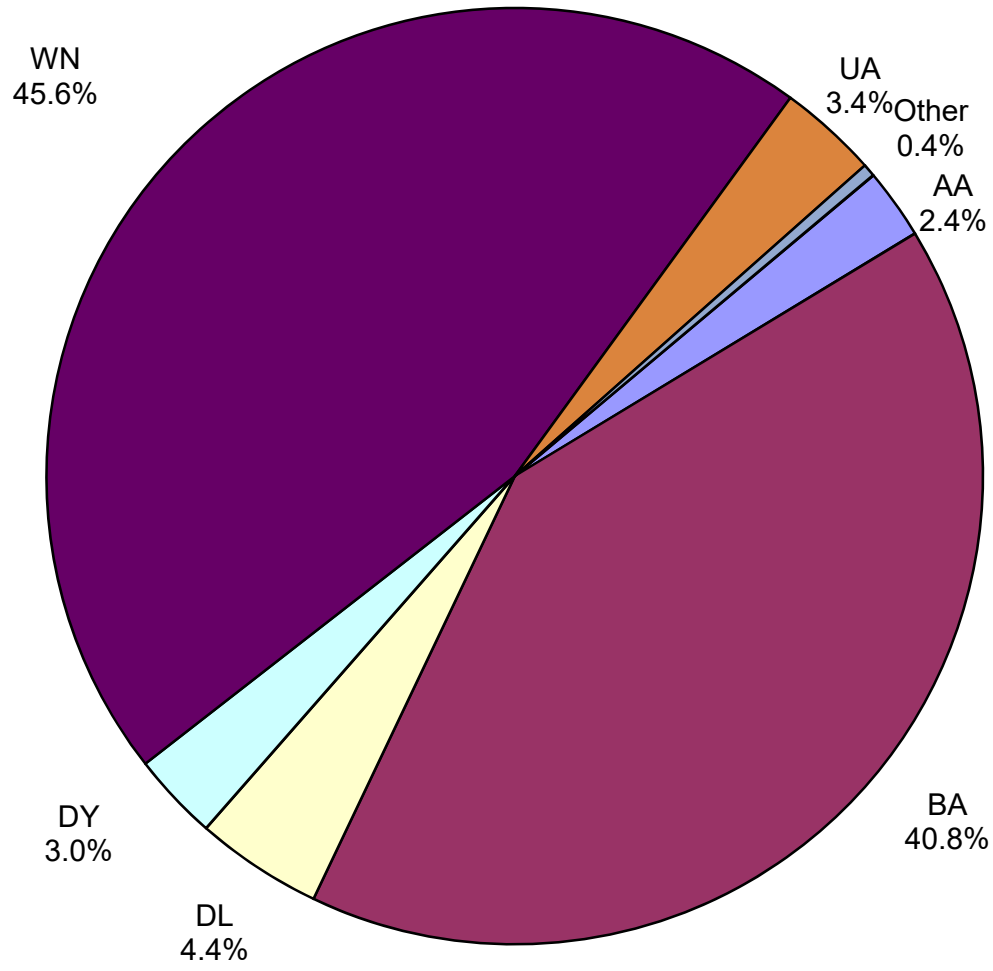
**All Passenger Carriers
Enplaned Revenue Passengers
April 2019**



Other: Aeromexico, Air Canada, Allegiant Air, British Airways, Norwegian Air UK, LTD., Sun Country Airlines and VIA Airlines

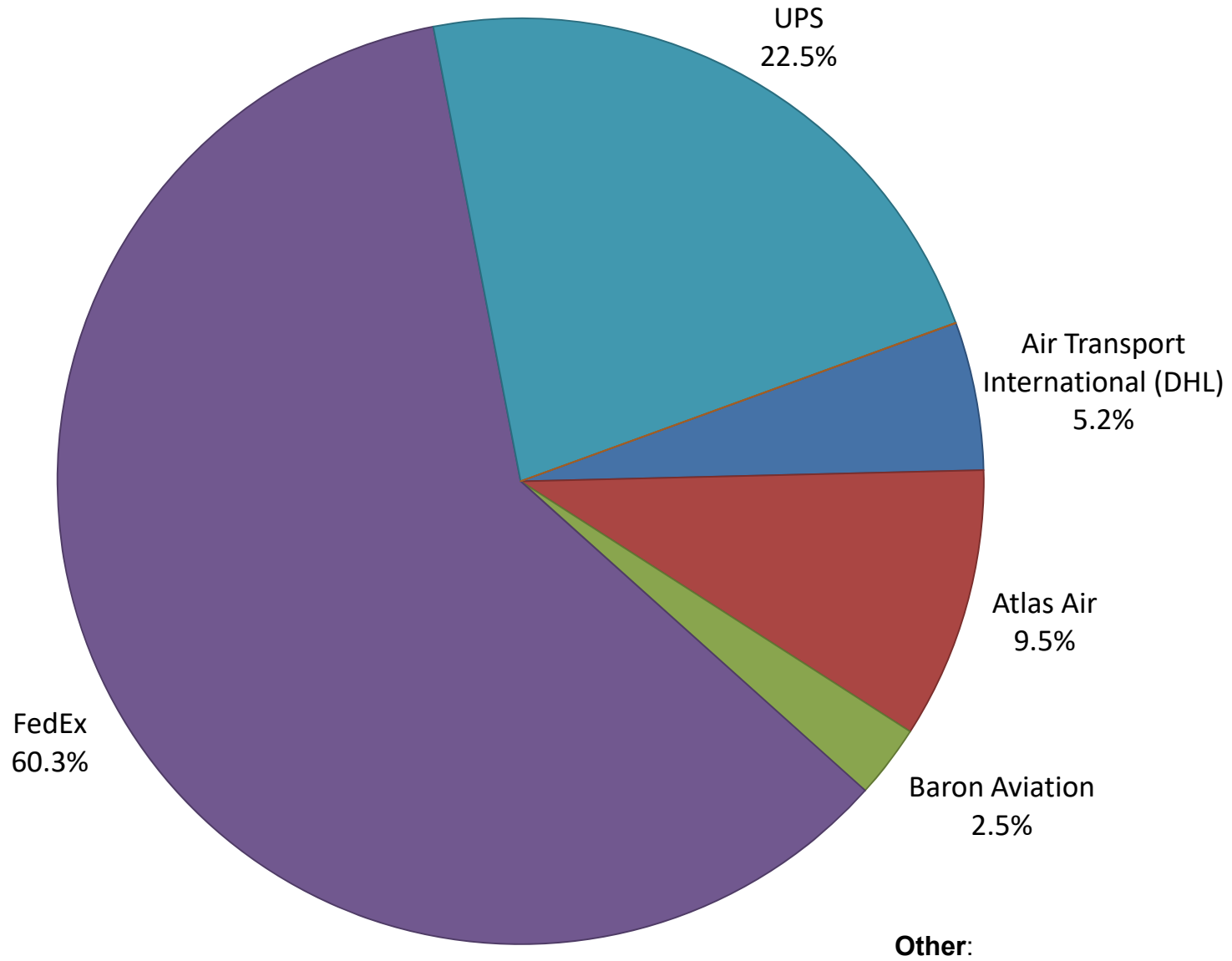
Note: American/US Airways, Delta and United Airlines percentages include Affiliates.

**AUS Belly Freight Market Shares
April 2019**

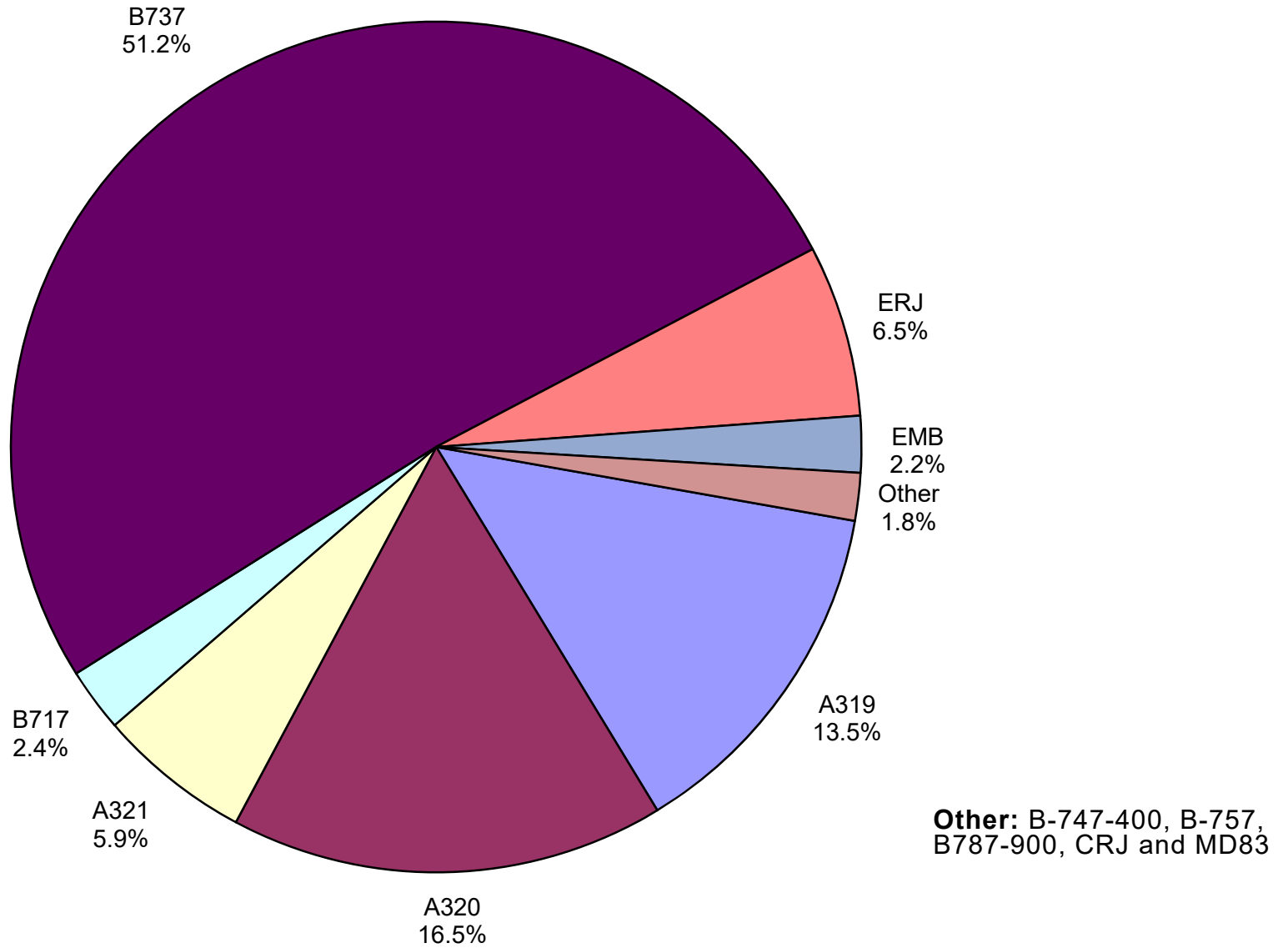


Other = Alaska Airlines

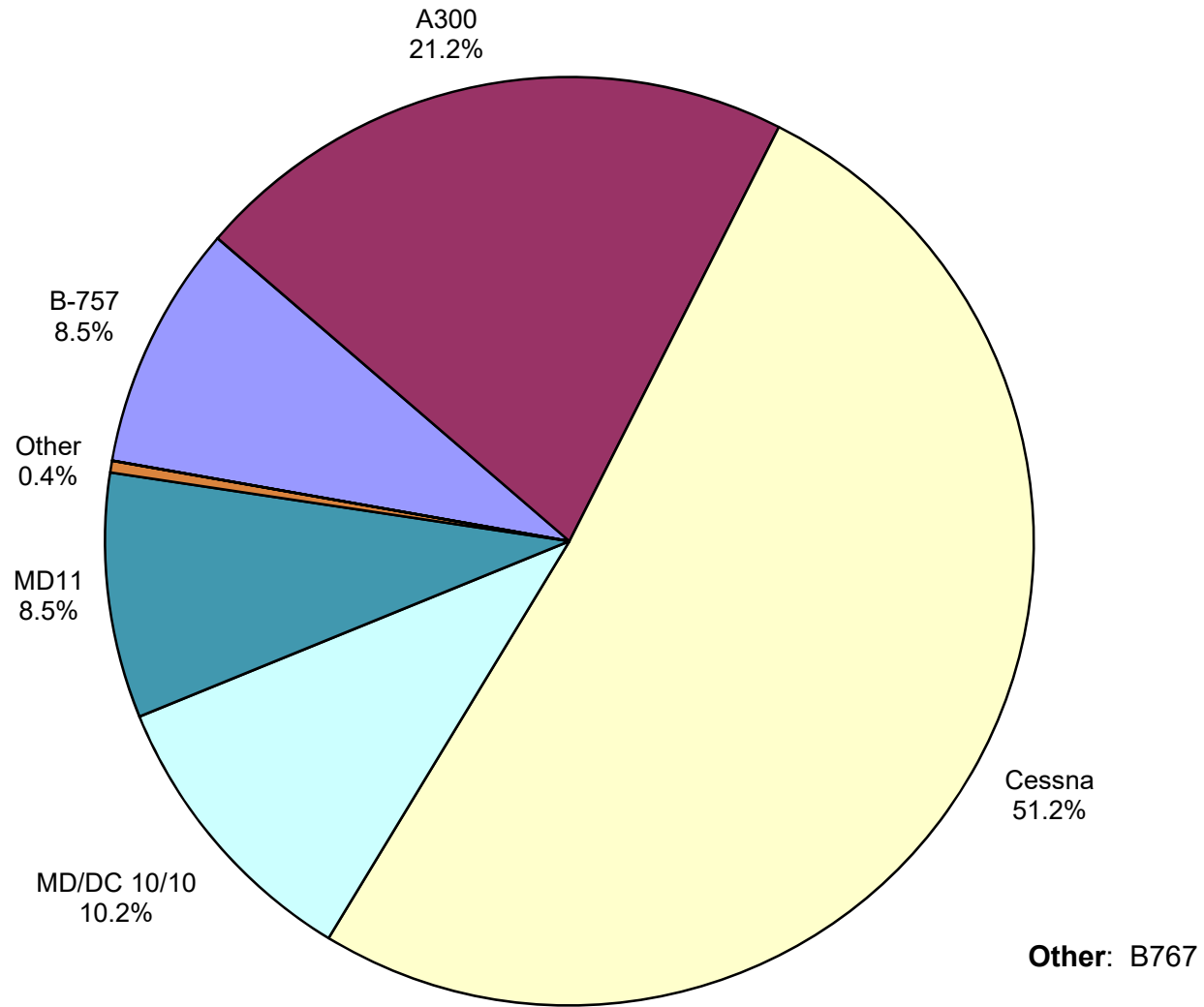
Air Cargo Market Share April 2019



**AUS Scheduled Passenger Aircraft Fleet Mix
April 2019**



**AUS Scheduled Cargo Aircraft Fleet Mix
April 2019**



Austin-Bergstrom International Airport

PAX Detail Report - April, 2019

Company	04/2019	04/2018	Period		YTD 2019	YTD 2018	YTD		2019 Share	2018 Share	Share Diff
			Difference	Change			Difference	Change			
Aerovías de Mexico S.A. de C.V.	3,162	3,473	-311	-9.0	11,762	13,561	-1,799	-13.3	0.2	0.3	-0.1
Air Canada	5,191	3,835	1,356	35.4	19,362	14,266	5,096	35.7	0.4	0.3	0.1
Alaska Airlines	52,913	46,289	6,624	14.3	187,471	166,710	20,761	12.5	3.7	3.6	0.1
Allegiant Air	19,311	28,168	-8,857	-31.4	59,920	100,139	-40,219	-40.2	1.2	2.1	-1.0
American Airlines	248,529	229,484	19,045	8.3	981,773	862,680	119,093	13.8	19.2	18.4	0.8
British Airways	16,254	13,842	2,412	17.4	54,785	45,213	9,572	21.2	1.1	1.0	0.1
Concesionaria Vuela Compañía de Aviación, S.A.P.I. de C.V.	0	1,236	-1,236	-100.0	434	4,480	-4,046	-90.3	0.0	0.1	-0.1
Delta Air Lines	195,128	179,468	15,660	8.7	683,651	625,014	58,637	9.4	13.4	13.3	0.0
Deutsche Lufthansa AG	0	0	0	0.0	259	0	259	0.0	0.0	0.0	0.0
Frontier Airlines	44,027	95,447	-51,420	-53.9	174,413	223,127	-48,714	-21.8	3.4	4.8	-1.4
JetBlue Airways	46,874	48,247	-1,373	-2.8	179,644	194,772	-15,128	-7.8	3.5	4.2	-0.6
Miami Air International	0	0	0	0.0	776	309	467	151.1	0.0	0.0	0.0
Norwegian Air UK LTD	7,695	6,648	1,047	15.7	15,351	8,367	6,984	83.5	0.3	0.2	0.1
Scandinavian Airlines	0	0	0	0.0	423	697	-274	-39.3	0.0	0.0	0.0
Southwest Airlines	492,042	468,540	23,502	5.0	1,811,635	1,706,105	105,530	6.2	35.4	36.4	-1.0
Spirit Airlines	62,467	0	62,467	0.0	159,800	0	159,800	0.0	3.1	0.0	3.1
Sun Country Airlines	2,173	367	1,806	492.1	3,697	1,647	2,050	124.5	0.1	0.0	0.0
Swift Air	0	0	0	0.0	993	559	434	77.6	0.0	0.0	0.0
United Airlines	212,380	199,182	13,198	6.6	768,013	699,977	68,036	9.7	15.0	14.9	0.1
VIA Airlines	1,131	712	419	58.8	3,064	3,872	-808	-20.9	0.1	0.1	0.0
Virgin America	0	0	0	0.0	0	11,117	-11,117	-100.0	0.0	0.2	-0.2
Report Totals	1,409,277	1,324,938	84,339	6.4%	5,117,226	4,682,612	434,614	9.3%			

Statistics Included in Report:

Domestic Passengers:	Enplaned Revenue, Deplaned Revenue, Enplaned Non-Revenue, Deplaned Non-Revenue
International Passengers:	Enplaned Revenue, Deplaned Revenue, Enplaned Non-Revenue, Deplaned Non-Revenue
International Pre-Cleared Passengers:	Enplaned Revenue, Deplaned Revenue, Enplaned Non-Revenue, Deplaned Non-Revenue
South Terminal Domestic Passengers:	Enplaned Revenue, Deplaned Revenue, Enplaned Non-Revenue, Deplaned Non-Revenue

Austin-Bergstrom International Airport

Summary Landing Report

Landing Type: Total

Month	2019		2018		2017		% Change 2019 - 2018		% Change 2018 - 2017	
	Count	Weight	Count	Weight	Count	Weight	Count	Weight	Count	Weight
January	5,348	733,746,679	5,086	688,923,110	4,768	612,688,871	5.15%	6.51%	6.67%	12.44%
February	5,040	692,708,930	4,706	637,500,756	4,357	552,711,639	7.10%	8.66%	8.01%	15.34%
March	5,964	825,483,911	5,643	760,648,260	5,307	685,661,659	5.69%	8.52%	6.33%	10.94%
April	5,899	815,621,798	5,797	793,367,736	5,179	689,402,051	1.76%	2.81%	11.93%	15.08%
May			6,117	831,431,763	5,529	736,484,083			10.63%	12.89%
June			6,211	852,438,818	5,603	752,628,599			10.85%	13.26%
July			6,346	869,502,671	5,698	763,088,836			11.37%	13.95%
August			6,245	861,046,997	5,490	741,110,019			13.75%	16.18%
September			5,737	790,731,351	5,046	679,381,339			13.69%	16.39%
October			6,078	846,310,860	5,448	743,973,610			11.56%	13.76%
November			5,684	780,994,101	5,289	718,179,948			7.47%	8.75%
December			5,600	761,317,385	5,442	737,424,963			2.90%	3.24%
Totals for Selected Period	22,251	3,067,561,318	21,232	2,880,439,862	19,611	2,540,464,220	4.80%	6.50%	8.27%	13.38%
Yearly Totals	22,251	3,067,561,318	69,250	9,474,213,808	63,156	8,412,735,617			9.65%	12.62%